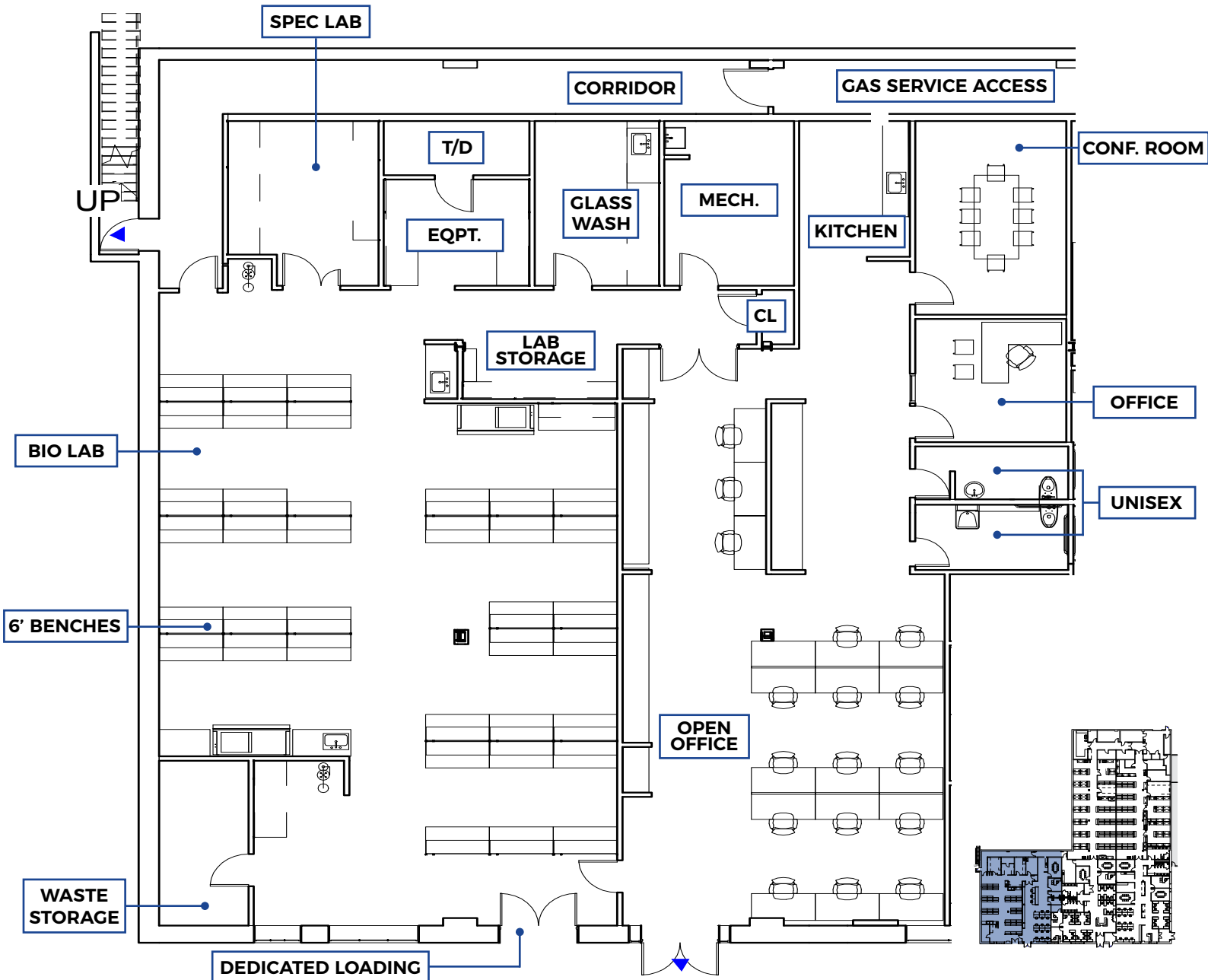


19-31 NEEDHAM STREET

NEWTON, MA

SPEC SUITE 102 • 5,550 RSF



Floor Plan measurements are approximate and are for illustrative purposes only. While we do not doubt the floor plans accuracy, we make no guarantee, warranty or representation as to the accuracy and completeness of the floor plan.

**LINCOLN
PROPERTY
COMPANY**

TIM LATHAM
Senior Vice President
617.951.4104
tlatham@lpc.com

CHRIS DEVAUX
Vice President
617.951.4124
cdevaux@lpc.com

JAMES TAMBONE
Vice President
617.951.4105
jtambone@lpc.com

**WASTE
STORAGE**