

# NEW REDEVELOPMENT

# 629 CAMBRIDGE STREET

CAMBRIDGE, MA

UNDER CONSTRUCTION



UP TO 16,500 SF OFFICE/R&D  
SPACE AVAILABLE

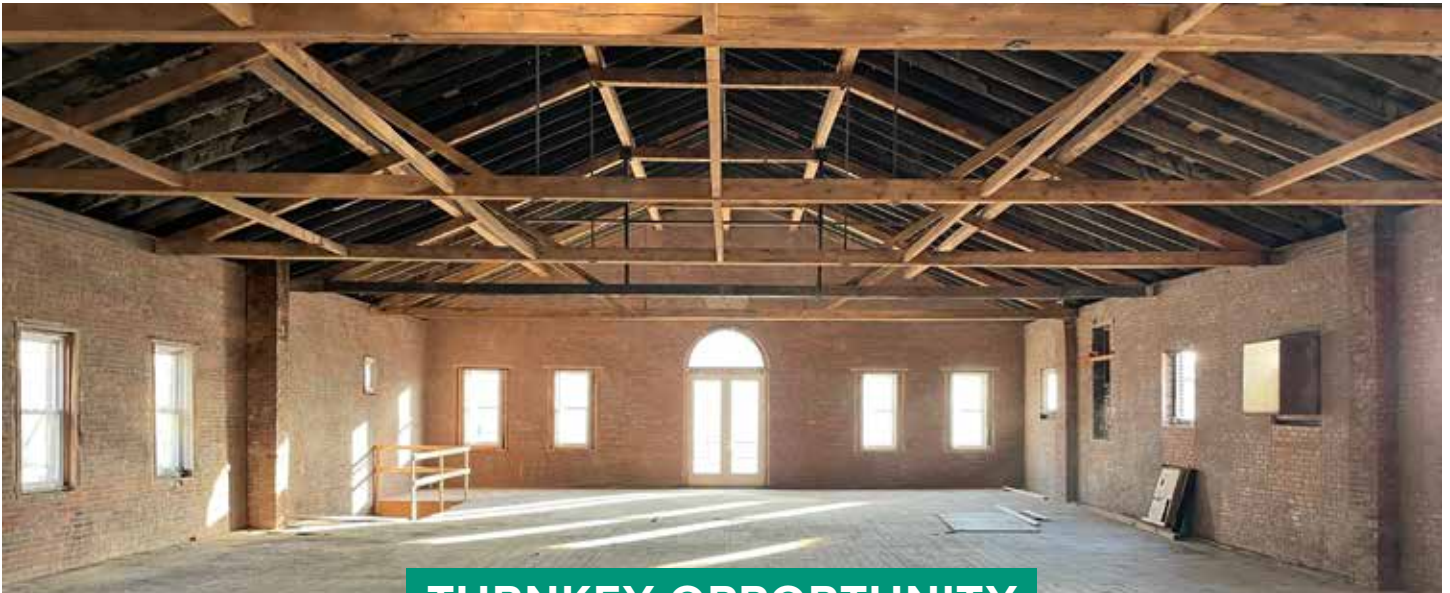
INTERIOR CONSTRUCTION  
PRE-PERMITTED

MARCH 2024  
OCCUPANCY

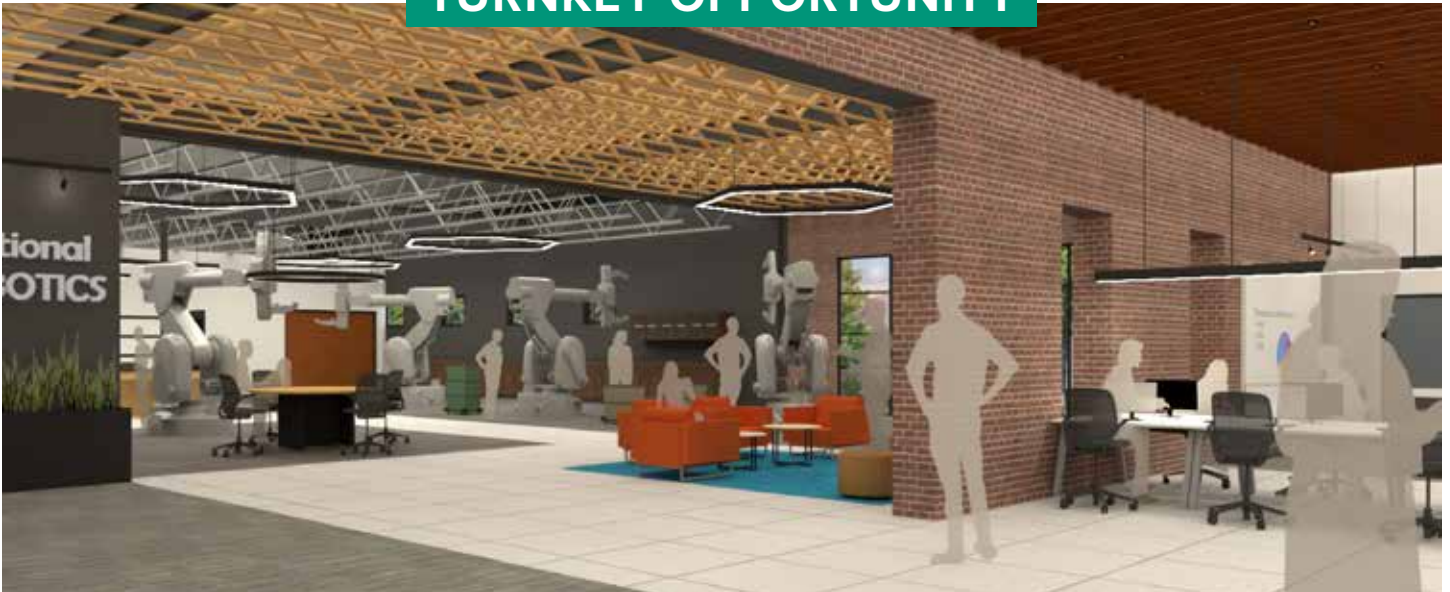


LINCOLN  
PROPERTY  
COMPANY

RIVERSIDE  
PROPERTIES, INC



## TURNKEY OPPORTUNITY



## BUILDING DETAILS

- **Premises:** 16,500 SF (Subdividable)
  - Office: ~4,000 SF
  - Flex: ~12,500 SF
- **Clear Heights:** 14'-16'
- **Power:** 1,200 Amps 3-phase
- **Loading:** One (1) drive in door
- **Parking:** 3-9 spaces at market rates
- **Occupancy:** March 2024
- **Signage:** Available upon approval from City of Cambridge
- **Lab:** Small wet lab capability



CHRISTOPHER SCOTT  
*Vice President*  
617.951.4135  
cscott@lpc.com

JACK GALVIN  
*Associate*  
617.951.4119  
jgalvin@lpc.com

# FLOOR PLAN RENDERINGS

FIRST FLOOR



SECOND FLOOR



*Floor Plan measurements are approximate and are for illustrative purposes only. While we do not doubt the floor plans accuracy, we make no guarantee, warranty or representation as to the accuracy and completeness of the floor plan.*

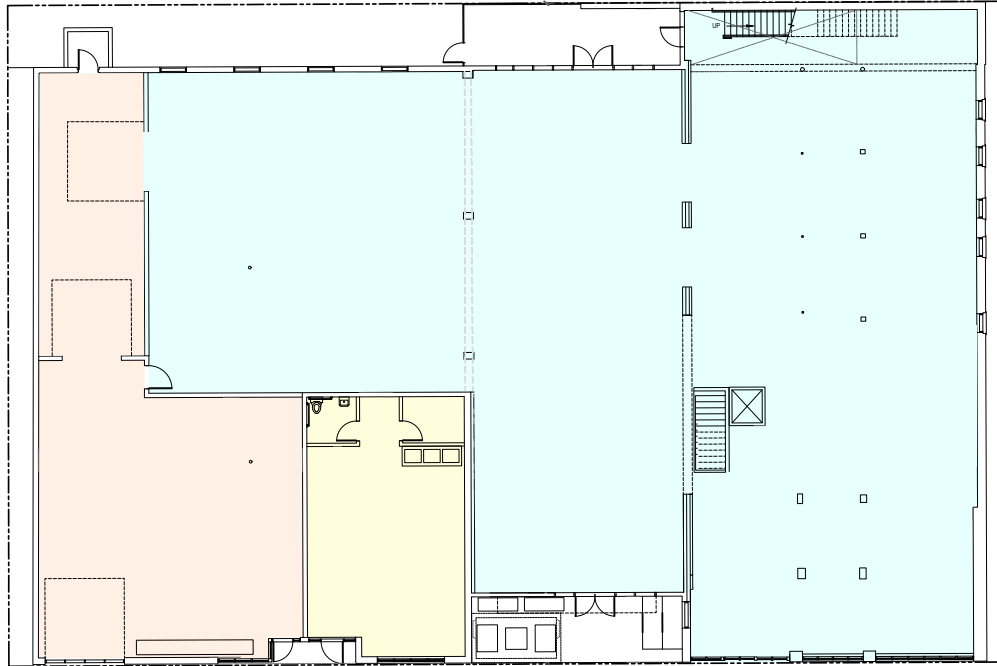


CHRISTOPHER SCOTT  
Vice President  
617.951.4135  
cscott@lpc.com

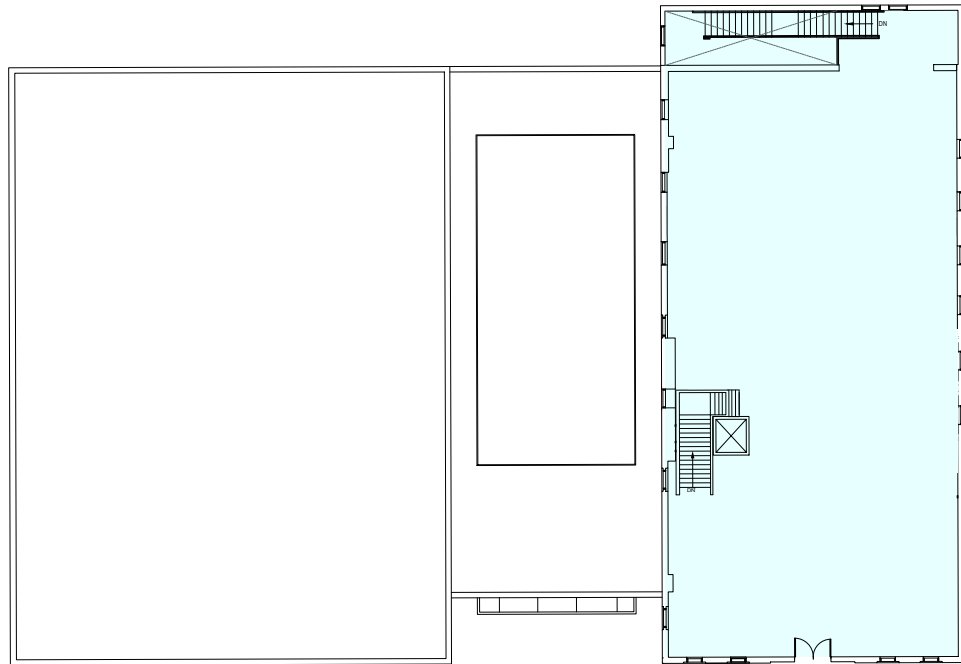
JACK GALVIN  
Associate  
617.951.4119  
jgalvin@lpc.com




# PROPOSED FLOOR PLANS

FIRST FLOOR



SECOND FLOOR



 Shipping/Receiving     Retail     Office/R&D

*Floor Plan measurements are approximate and are for illustrative purposes only. While we do not doubt the floor plans accuracy, we make no guarantee, warranty or representation as to the accuracy and completeness of the floor plan.*



CHRISTOPHER SCOTT  
Vice President  
617.951.4135  
cscott@lpc.com

JACK GALVIN  
Associate  
617.951.4119  
jgalvin@lpc.com