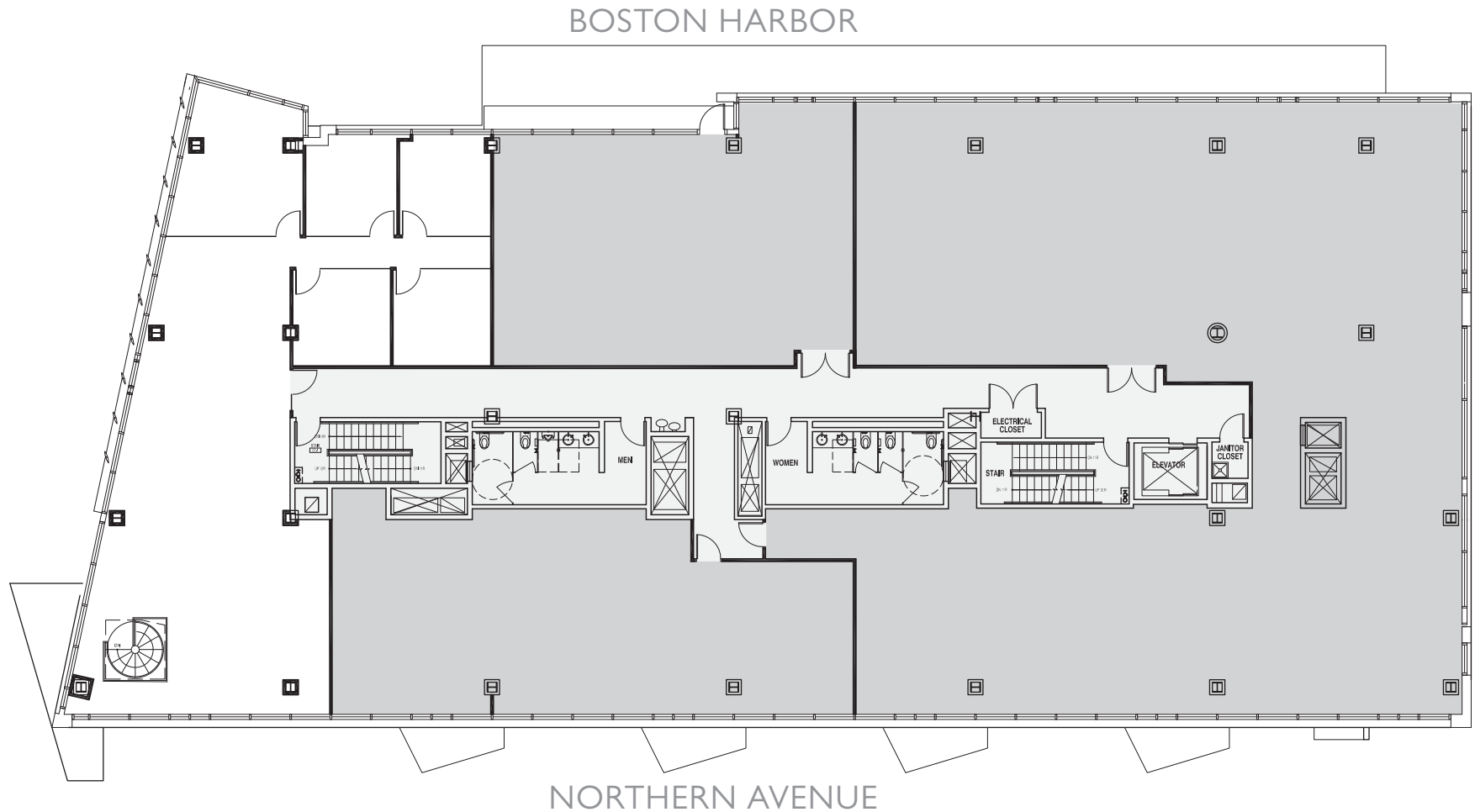


# LIBERTY WHARF | SEAPORT WATERFRONT 250 NORTHERN AVENUE

4<sup>TH</sup> FLOOR | 3,289 RSF



*Floor Plan measurements are approximate and are for illustrative purposes only. While we do not doubt the floor plans accuracy, we make no guarantee, warranty or representation as to the accuracy and completeness of the floor plan.*



**JEFFREY MOORE**  
Senior Vice President  
617.951.4161  
jmoore@lpc.com

**BRENDAN MILLER**  
Senior Vice President  
617.951.4148  
bmiller@lpc.com

**MARY PATALITA**  
Associate  
617.951.4119  
mpatalita@lpc.com

Lincoln Property Company | 53 State Street, Boston, MA | 617.951.4100 | LPCBoston.com