

66 CENTRAL STREET

WELLESLEY, MA | 128 WEST



OFFICE SPACE AVAILABLE FOR LEASE

Lincoln Property Company is pleased to present two suites of office space on the 2nd floor at 66 Central Street in Wellesley, MA.

66 Central Street is conveniently located in Wellesley Center, within walking distance of public transportation offering easy access to Boston by car or MBTA.

AVAILABILITY:

Suite 7 1,085 SF

OCCUPANCY:

Immediately

BUILDING SIZE:

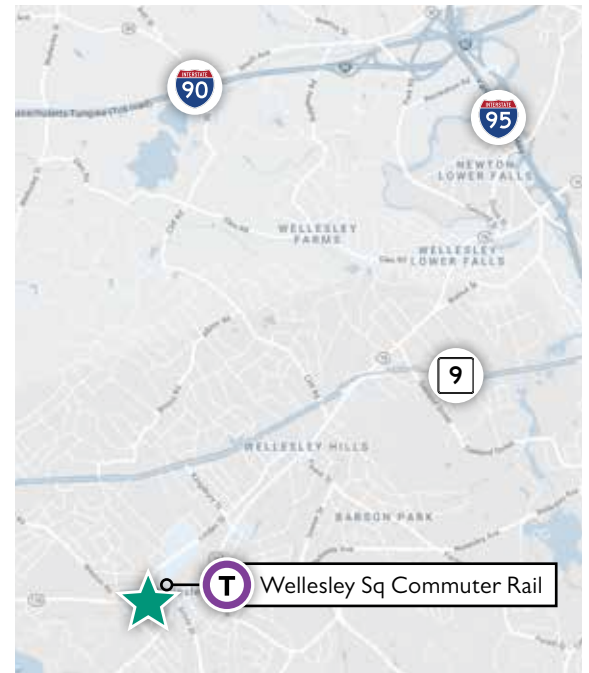
13,525 SF

RATE:

Market/Negotiable

AREA AMENITIES:

- MBTA Commuter Rail
- Many Area Restaurants
- Child Care
- Walking/Bike Paths

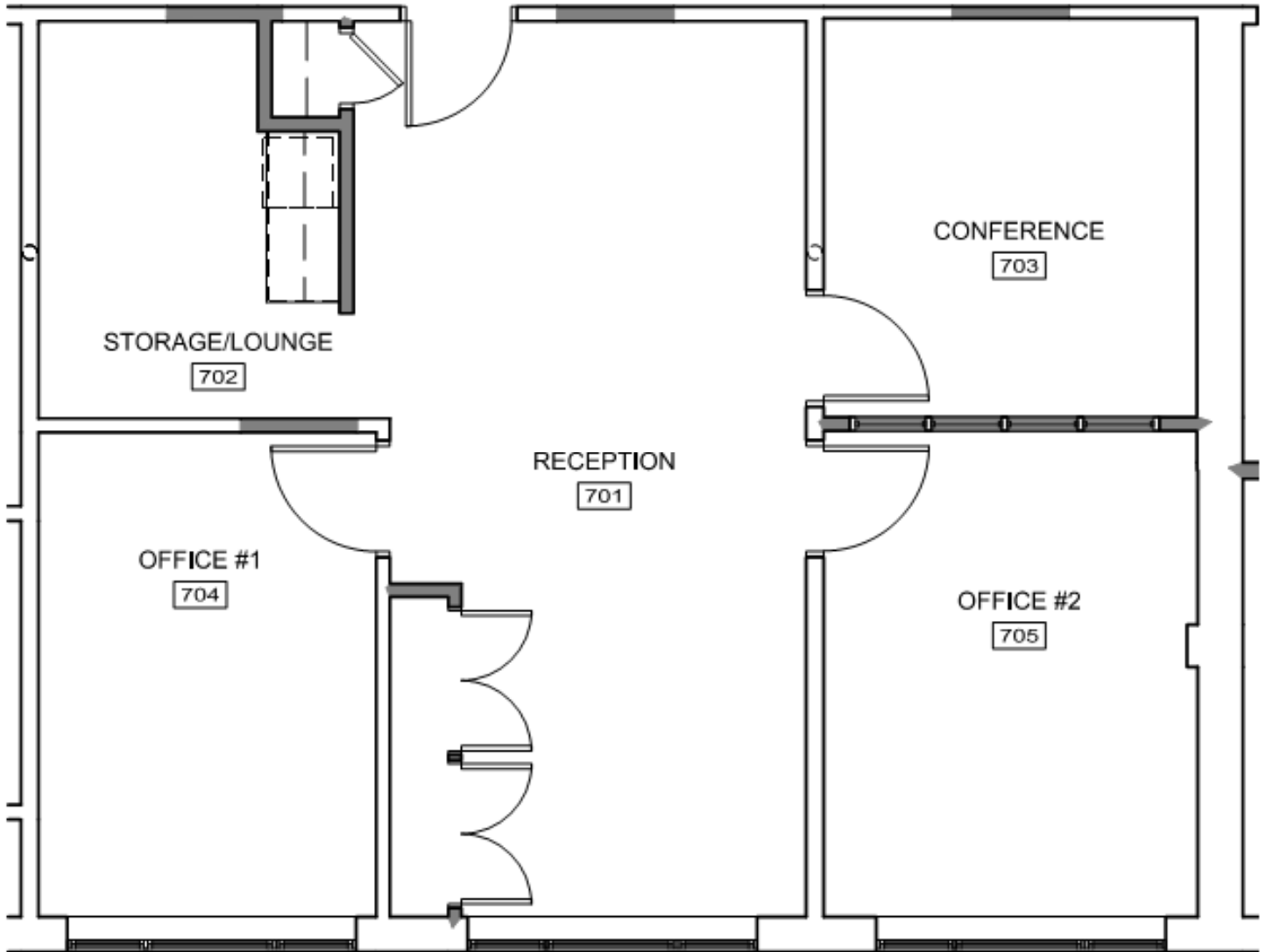


LINCOLN
PROPERTY
COMPANY

66 CENTRAL STREET

WELLESLEY, MA | 128 WEST

SUITE 7 | 1,085 RSF



LINCOLN
PROPERTY
COMPANY

ELLISON PATTEN
Senior Vice President
617.951.4136
epatten@lpc.com