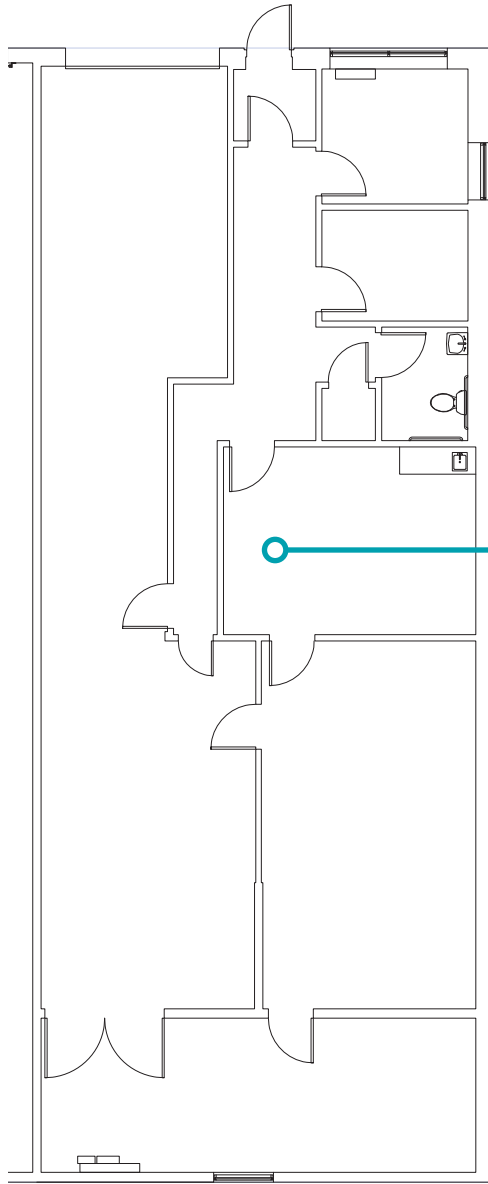


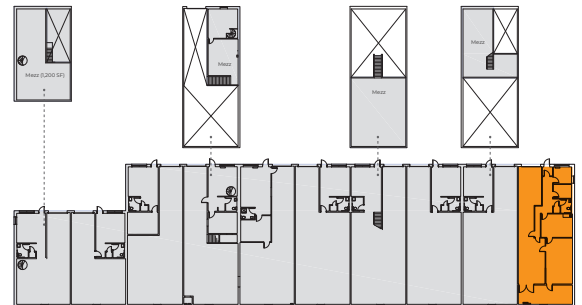
41 Brigham Street · Marlborough, MA

# BRIGHAM BUSINESS PARK

Second Floor · 2,300 SF



Ste #11  
2,300 SF  
Avail. 7/31/2019



**LINCOLN**  
**PROPERTY**  
**COMPANY**

**TIM LATHAM**  
*Senior Vice President*  
617.951.4104  
tlatham@lpc.com

**CHRIS DEVAUX**  
*Vice President*  
617.951.4124  
cdevaux@lpc.com

**JAMES TAMBONE**  
*Associate*  
617.951.4105  
jtambone@lpc.com