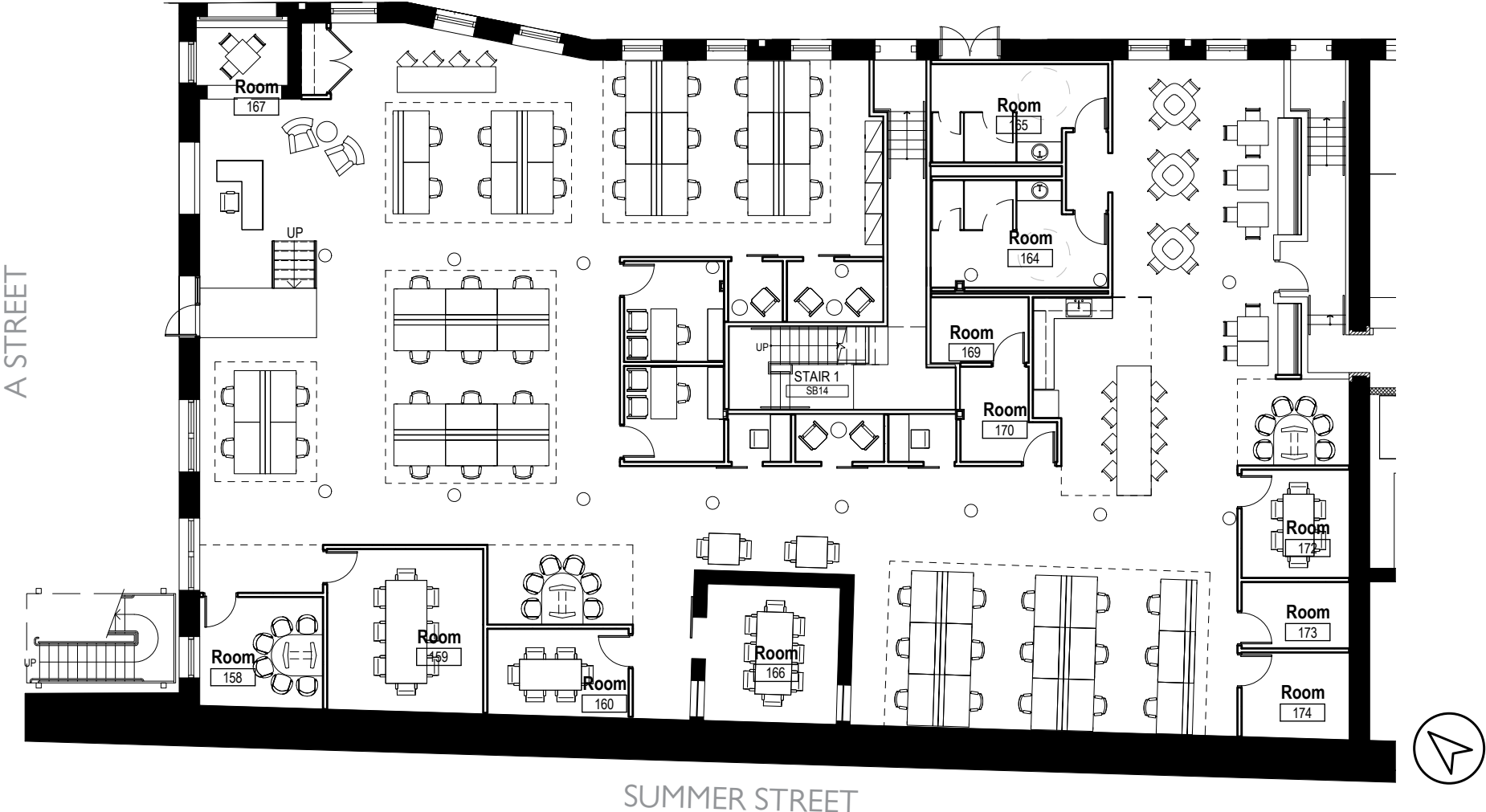


320 SUMMER STREET | BOSTON

FLOOR PLAN* | ± 6,800 SF



*Not as build, potential configuration

**LINCOLN
PROPERTY
COMPANY**

JEFFREY MOORE
Senior Vice President
617.951.4161
jmoore@lpc.com

BRENDAN MILLER
Vice President
617.951.4148
bmiller@lpc.com

MARY PATALITA
Associate
617.951.4119
mpatalita@lpc.com