

Washington Place

Medical Park

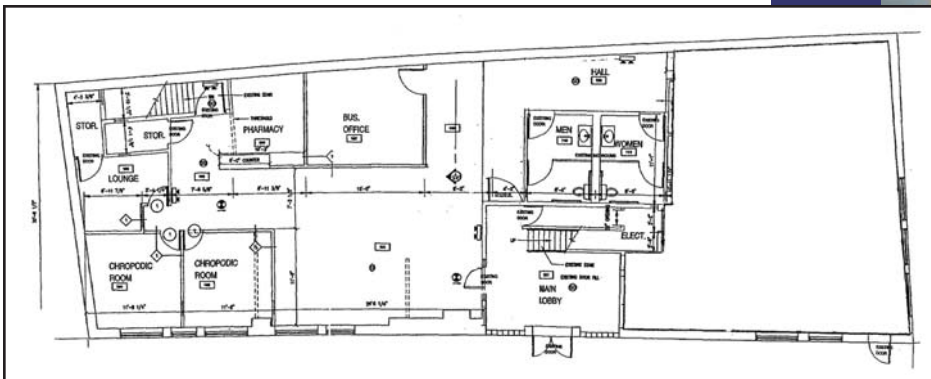
**637-651 WASHINGTON STREET
BROOKLINE, MASSACHUSETTS**



Lincoln Property Company is pleased to present 2,000 SF of medical office space for lease at 637-651 Washington Street in Brookline, Massachusetts.

Washington Place Medical Park offers great space, with easy access to public transportation and plenty of parking.

BUILDING SIZE: 25,000 SF
AVAILABLE SPACE: 2,000 SF
RENTAL RATE: NEGOTIABLE
SPACE TYPE: MEDICAL/OFFICE



For more information, or to schedule a tour, please contact:

**LINCOLN
PROPERTY
COMPANY**

225 Franklin Street, 23rd Floor
Boston, MA 02110

Tel: 617-951-4100
Fax: 617-737-3315

Ellison Patten ♦ 617-951-4136
Vice President ♦ epatten@lpc.com