

# 58 CHARLES STREET

## CAMBRIDGE, MA



**Lincoln Property Company is pleased to present 1,250-12,350 SF of Office Space for sublease**

**Ground Floor Suites:**

- ◆ 4,748 SF
- ◆ 7,602 SF
- ◆ contiguous to 12,350 SF

**3rd Floor Suites:**

- ◆ 1,250 SF
- ◆ 3,052 SF



**For more information, please contact**

***Ned Halloran***

**617-951-4109 ◆ [nhalloran@lpc.com](mailto:nhalloran@lpc.com)**

**LINCOLN  
PROPERTY  
COMPANY**

225 Franklin Street, 23rd Floor ◆ Boston, MA  
(t) 617-951-4100 ◆ (f) 617-737-3315 ◆ [www.lpcboston.com](http://www.lpcboston.com)

# 58 CHARLES STREET

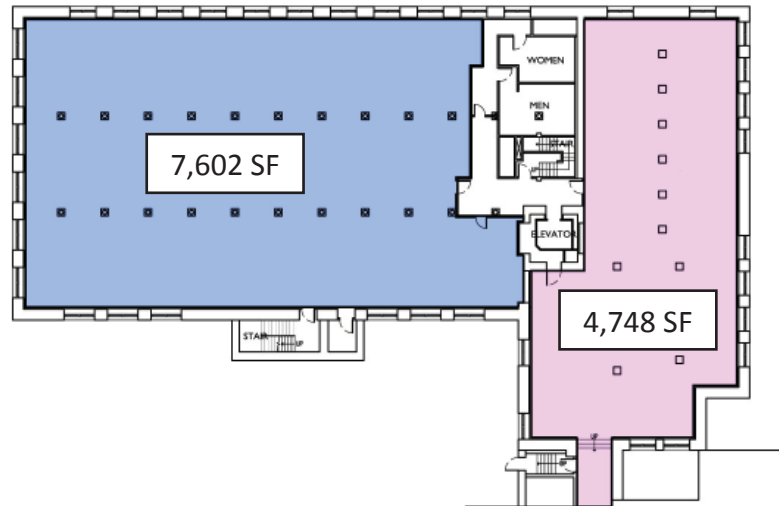
## CAMBRIDGE, MA

### BUILDING SPECIFICATIONS

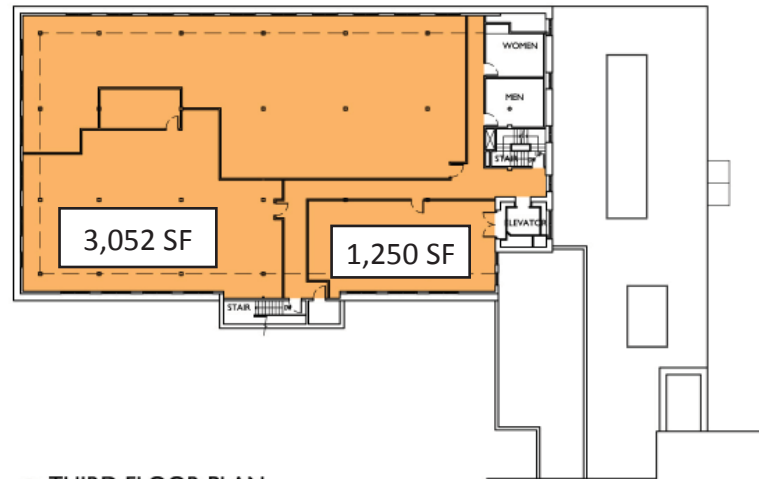
**Total RBA:** 47,912 SF  
**Parking:** 1.2/1000  
**Building Type:** 4-story first class office & lab building

#### **Construction:**

- ◆ **Exterior:** Steel frame with red brick & glass
- ◆ **Interior:** Brick & beam style office space



① GROUND FLOOR PLAN



④ THIRD FLOOR PLAN

For more information, please contact

*Ned Halloran*

617-951-4109 ◆ [nhalloran@lpc.com](mailto:nhalloran@lpc.com)



225 Franklin Street, 23rd Floor ◆ Boston, MA  
(t) 617-951-4100 ◆ (f) 617-737-3315 ◆ [www.lpcboston.com](http://www.lpcboston.com)

The information contained herein is from sources deemed reliable and no warranty or representation is made as to the accuracy thereof and same is submitted subject to errors, omissions, change of price, rental or other conditions prior to sale, lease or financing or withdrawal without notice. No liability of any kind is to be imposed on the broker herein.